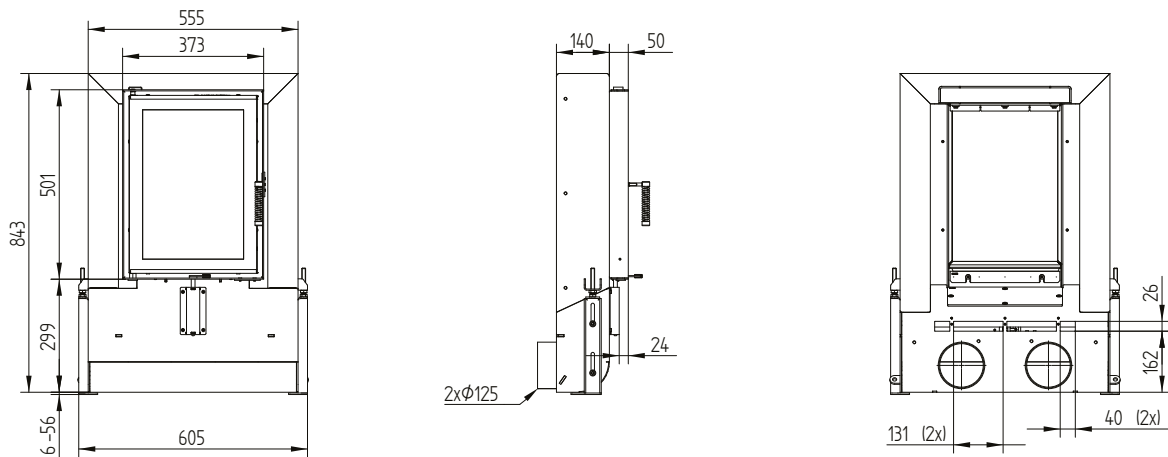


## Technical data

General technical information	
Recommended wood load	10 kg
Cross section of combustion air opening	220 cm <sup>2</sup>
Combustion air connection	2 × Ø 125 mm
Free glass area	1 148 cm <sup>2</sup>

Quantity	Volume flow		Pressure loss
3 kg	28,2 m <sup>3</sup> /h	0,008 m <sup>3</sup> /h	0,4 Pa
4 kg	37,6 m <sup>3</sup> /h	0,010 m <sup>3</sup> /h	0,7 Pa
5 kg	47,0 m <sup>3</sup> /h	0,013 m <sup>3</sup> /s	1,1 Pa
6 kg	56,3 m <sup>3</sup> /h	0,016 m <sup>3</sup> /s	1,6 Pa
7 kg	65,7 m <sup>3</sup> /h	0,018 m <sup>3</sup> /s	2,3 Pa
8 kg	75,1 m <sup>3</sup> /h	0,021 m <sup>3</sup> /s	3,0 Pa
9 kg	84,5 m <sup>3</sup> /h	0,023 m <sup>3</sup> /s	3,8 Pa
10 kg	93,9 m <sup>3</sup> /h	0,026 m <sup>3</sup> /s	4,8 Pa
11 kg	103,3 m <sup>3</sup> /h	0,029 m <sup>3</sup> /s	5,8 Pa
12 kg	112,7 m <sup>3</sup> /h	0,031 m <sup>3</sup> /s	7,0 Pa
15 kg	140,9 m <sup>3</sup> /h	0,039 m <sup>3</sup> /s	11,2 Pa
20 kg	187,8 m <sup>3</sup> /h	0,052 m <sup>3</sup> /s	20,2 Pa

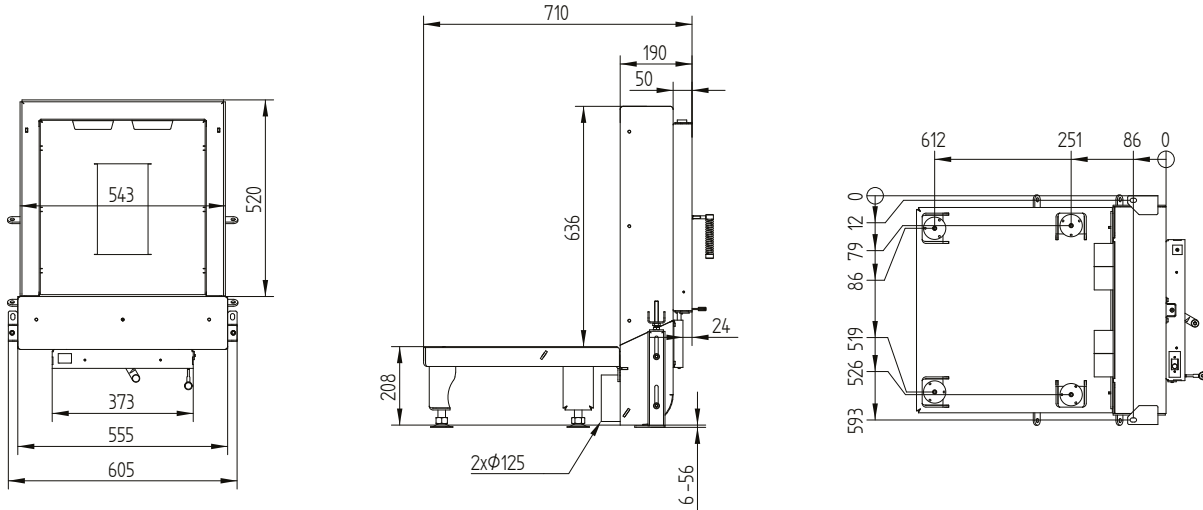
## GT2 37/50 / air inlet



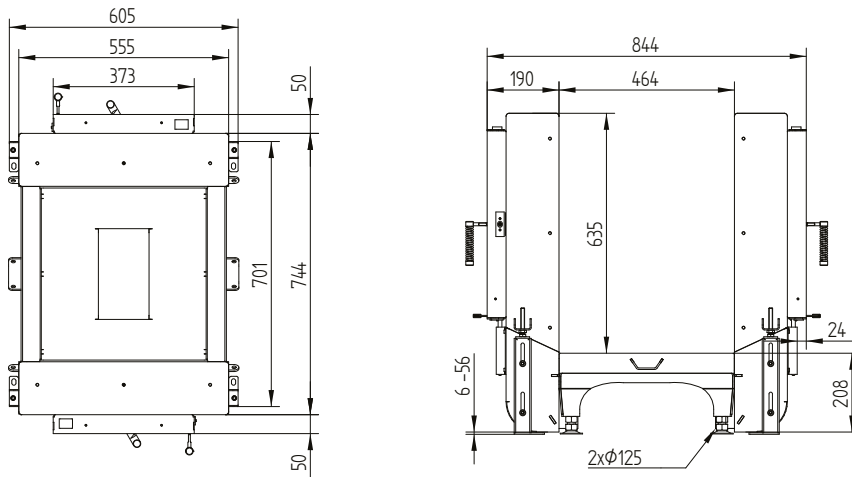
# GT2 37/50

Technical data  
Version 09/2023

## GT2 37/50 base frame with air distribution / feet

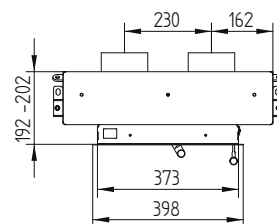
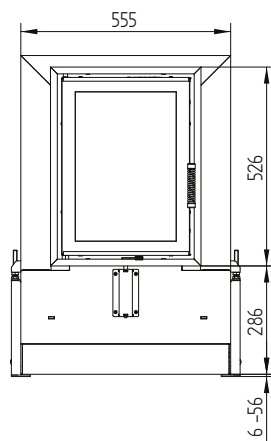
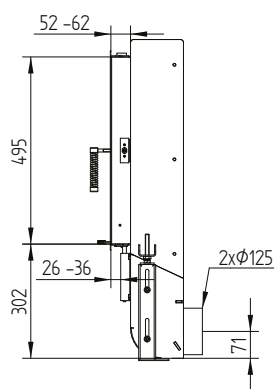


## GT2 37/50 base frame with air distribution for tunnel



## Cover frame 37/50 4sides 50 mm 1 x 90°

---



## Cover frame 37/50 4sides 80 mm 2 x 45°

---

